

DRDP[®] Assessment in ChildPlus



Presented by:

Jessica Elzey, Ed.S.

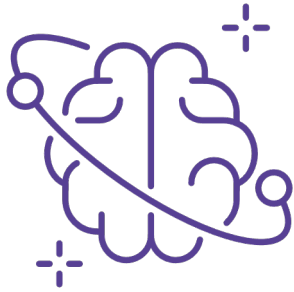
Account Executive

Jessica.Elzey@childplus.com

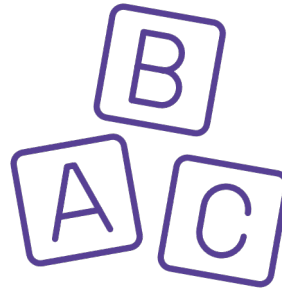
(404) 997-7194

What is the DRDP?

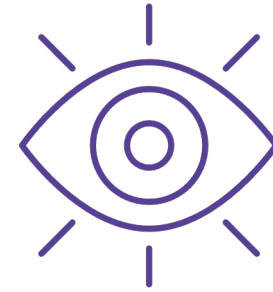
What is the DRDP?



The Desired Results Developmental Profile (DRDP) is a strength-based developmental assessment tool for ages birth to five



Aligns with the Head Start Early Learning Outcomes Framework (ELOF)



Administered through teacher and family observations, as well as children's work





More about the DRDP

- Created by the California Department of Education, in partnership with the University of California, Berkeley as well as the Desired Results Access Project at the Napa County Office of Education and WestEd's Center for Child & Family Studies
- Research-backed tool that produces valid, reliable results
- Focuses on positive aspects of a child's developmental progress from infancy to kindergarten entry
- Designed with all children in mind, including those with IFSPs and IEPs and dual language learners
- Available in both English and Spanish



Developmental Domains Overview

The DRDP outlines eight developmental domains, with a variety of views for Infant/Toddler and Preschool age groups

- | | | | |
|--|---|---|--|
| <p>1 ATL – REG:
Approaches to Learning and Self-regulation</p> | <p>2 SED:
Social and Emotional Development</p> | <p>3 LLD:
Language and Literacy Development</p> | <p>4 ELD:
English Language Development</p> |
| <p>5 COG:
Cognitive Development
<i>includes Math and Science</i></p> | <p>6 PD – HLTH:
Physical Development–Health</p> | <p>7 HSS:
History–Social Science</p> | <p>8 VPA:
Visual and Performing Arts</p> |

DRDP (2015) Infant/Toddler Comprehensive View

For use with infants and toddlers

5 Developmental Domains
29 Measures

- **ATL-REG** (5)
- **SED** (5)
- **LLD** (5)
- **COG** (6)
- **PD-HLTH** (8)

DRDP (2015) Infant/Toddler Essential View

For use with infants and toddlers

5 Developmental Domains
21 Measures

- **ATL-REG** (4)
- **SED** (4)
- **LLD** (5)
- **COG** (4)
- **PD-HLTH** (4)

DRDP (2015) Preschool Comprehensive View

For use with preschool-age children

8 Developmental Domains
56 Measures

- **ATL-REG** (7)
- **SED** (5)
- **LLD** (10)
- **ELD** (4)
- **COG** (11)
- **PD-HLTH** (10)
- **HSS** (5)
- **VPA** (4)

DRDP (2015) Preschool Fundamental View

For use with preschool-age children

6 Developmental Domains
43 Measures

- **ATL-REG** (7)
- **SED** (5)
- **LLD** (10)
- **ELD** (4)
- **COG** (7)
- **PD-HLTH** (10)

DRDP (2015) Preschool Essential View

For use with preschool-age children

6 Developmental sub-Domains
29 Measures

- **ATL-REG** (4)
- **SED** (4)
- **LLD** (7)
- **ELD** (4)
- **COG** (6)
- **PD-HLTH** (4)

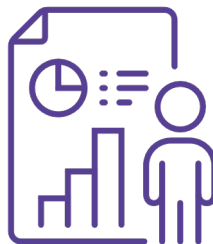
Benefits of Using the DRDP in ChildPlus



All-in-one system that stays in sync without needing to import or export data



Archive and access historical data with no additional archiving fees



See child assessment data from early infancy to kindergarten entry



Robust subgrouping reports can be generated instantly, with no delay in new observations being reflected



Compatible with all Head Start ELOF-aligned curriculum



Accessing the DRDP

- Access the DRDP by logging into your ChildPlus Online account on either desktop or a mobile device
- Initial set up is done in the desktop application. You can configure the Schedule Type and Recommended Observations settings to meet your program's needs

Schedule Type

☒ All assessments are due at the end of each assessment period

☐ The first assessment is due calendar days after into the

Each subsequent assessment is due

☐ at the end of each assessment period

☐ calendar days after the previous assessment is

* Choose 'program' if the due date timer continues from one program term to the next (normally appropriate for full-year programs).

Choose 'program term' if each child should be assessed 60 days from the beginning of each program term (normally appropriate for part-year programs).

Recommended Observations

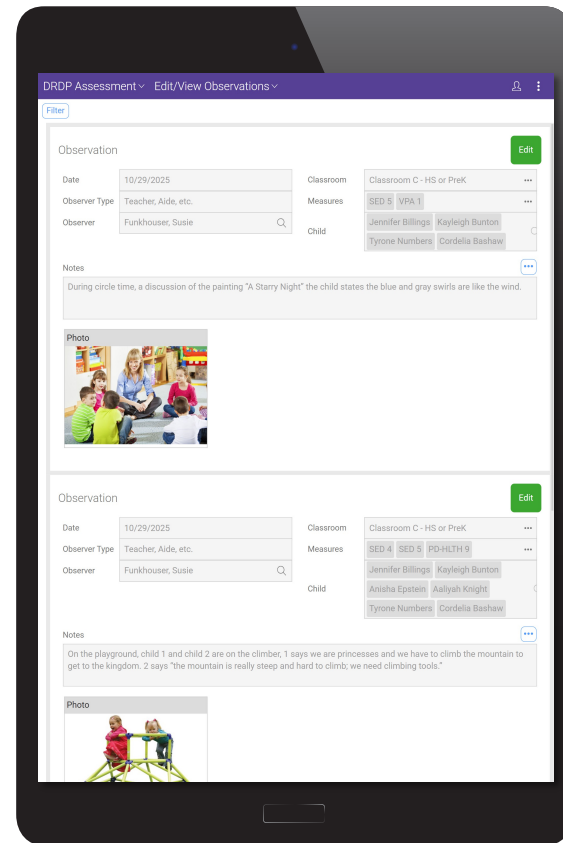
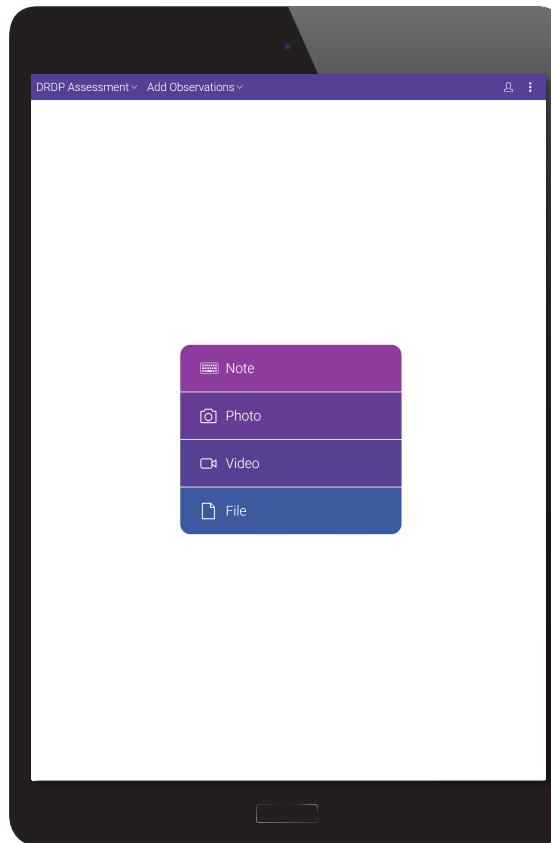
The recommended number of observations per measure is *

*Used for DRDP monitoring reports and teacher restrictions

☒ If a teacher attempts to rate a measure with less than the recommended number of observations during the assessment period,

Recording Data for the DRDP Assessment

- Quickly log observations on either a desktop computer or a mobile device
- Observations can be associated with one or multiple children and one or multiple developmental measures
- Observations can be created with written notes and photos, videos or additional files
- Edit observations at any time to add additional details



Viewing Student Progress

View a student's portfolio and current ratings directly in their profile

The screenshot displays the 'Portfolio and Ratings' section for student Kevin Arnold. The interface includes a sidebar with a list of participants, a search bar, and a main content area. The main content area shows a photo of Kevin Arnold counting stacking cups, with a description: 'The child is counting stacking cups. He counts, 3, 5, 6.' Below this, there is a photo of a child writing on a piece of paper, with a description: 'In the Art Center, the child writes scribbles on his painting with a marker. He says, "Look, teacher, this says it's a dinosaur named Lucy."' The interface also includes tabs for 'Portfolio' and 'Ratings', and a button to 'Add Observation'.

The screenshot displays the 'Ratings' section for student Kevin Arnold. The interface includes a sidebar with a list of participants, a search bar, and a main content area. The main content area shows a table of ratings for various skills, including 'Approaches to Learning-Self-Regulation (ATL-REG)', 'Social and Emotional Development (SED)', and 'Language and Literacy Development (LLD)'. The table includes columns for 'Responding', 'Exploring', 'Building', 'Integrating', 'Use', 'Condition', 'Emerging', and 'Unable'. The ratings are displayed as a grid of colored squares (green, yellow, orange, red) indicating the student's performance level. The interface also includes tabs for 'Portfolio' and 'Ratings', and a button to 'Edit'.

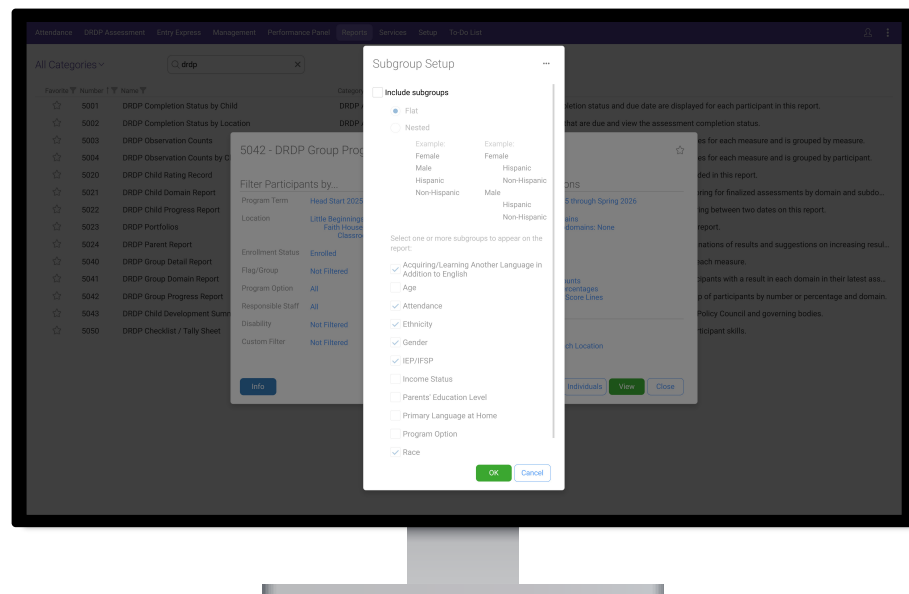
DRDP Reporting in ChildPlus

Individual progress reports make it easy to track developmental progress for each child, including data from previous assessment years



DRDP Subgroup Reporting

Subgroup reports allow data to be analyzed based on criteria such as age, attendance, income status and more



ChildPlus University Trainings

Trainings are available for both teachers and management

Teaching Staff Block

- ✓ ChildPlus Online Navigation
- ✓ DRDP Assessment Data Entry
- ✓ DRDP Assessment Data Entry Exercise
- ✓ DRDP Assessment Reports

Management Block

- ✓ DRDP Assessment Setup
- ✓ ChildPlus Online Navigation
- ✓ DRDP Assessment Data Entry Overview
- ✓ DRDP Assessment Reports

Additional Training Opportunities

- WestEd provides detailed training on the DRDP
- California Early Childhood Online (CECO) provides training on DRDP inter-rater reliability and modules on each domain, both at no cost



Support Every Step of the Way

Our dedicated ChildPlus customer support team can be reached in the following ways:



Start a live online chat



Email support@childplus.com



Call (800) 888-6674
during business hours



Getting Started



The DRDP in ChildPlus is available at an additional annual cost, added to your current ChildPlus subscription. We'll set you up with a free trial first, where you can use everything that DRDP Assessments have to offer.

Ready to start your
45-day free trial?





Thank You

Jessica Elzey, Ed.S., Account Executive

Jessica.Elzey@childplus.com

(404) 997-7194